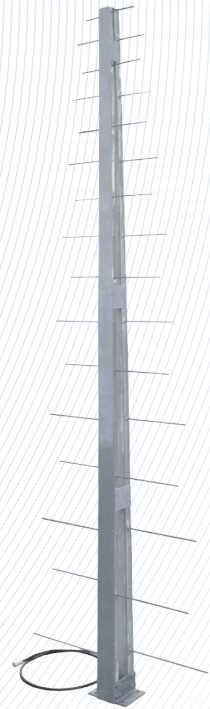


## MI-20 Family of Log-Periodic Antennas

- High Gain with wide bandwidths
- Low side lobes and high front-to-back ratio
- Cantilever mounting
- High reliability design for harsh environments



### Description

The MI-20 Family of Log-Periodic Antennas combines unusually good performance characteristics with high structural integrity. In general, log-periodic antennas assure higher front-to-back ratios and lower side lobe levels than can be obtained by corner reflectors. They also operate with constant gain and beamwidth characteristics over wide frequency ranges.

All antenna elements are of high-tensile, corrosion-resistant aluminum. Vibration dampers are installed to protect against fatigue failures. All electrical connections are hermetically sealed.

### Application

MI-20 antennas are suitable for use in communications, telemetry and command/control systems subject to severe environmental conditions. These antennas are designed for cantilever mounting to prevent the support structure from interfering with the radiation part of the antenna.

### Specifications

Model Number	MI-20-1	MI-20-2	MI-20-3
Freq. Range, MHz	100-174	120-150	216-470
Gain Nom. dB	10	10.5	10
VSWR Typ.	1.5:1	1.5:1	1.5:1
Max Beamwidth			
Horizontal	48°	46°	48°
Vertical	90°	80°	90°
Max Input Power, W	500	500	300
Dimensions			
Height, in. (cm)	144 (366)	144 (366)	94 (239)
Base Width, in. (cm)	63 (160)	53 (135)	31 (79)
End Width, in. (cm)	29 (74)	33 (84)	13 (33)
Weight, lbs. (kg)	76 (34.5)	76 (34.5)	32 (14.5)

Note: Antennas are connected to feed with Type N female connector. Weather load: 100 mph (160 kph) wind, no ice; 70 mph (112 kph) wind with 1 in (2.5 cm) radial ice; no wind, 2 in (5 cm) ice max.