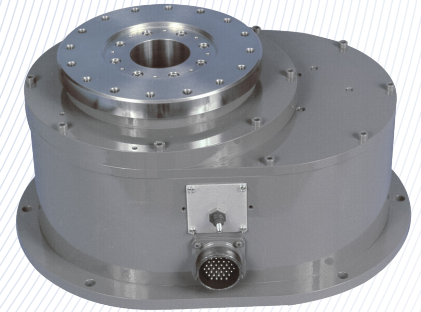


MI-6110 Family of Rotary Positioners

- Small size
- 1,000 lbs load capacity
- Three speed options available



Applications

The MI-6110 Family of Rotary Positioners is designed to fill roles in three major applications: azimuth positioning, antenna polarization positioning and compact range feed polarization positioning. For each of these applications a variation of the basic design of the MI-6111E has been implemented. The compact range configuration adds a special tilt housing and tower.

Specifications

Parameter	Units	MI-6111E
Max. Load	lbs	1,000
	kg	453.6
Max. Bending Moment	ft-lbs	500
	Nm	678
Turntable Diameter	in	8
	mm	203
Center Access Hole Diameter	in	2.38
	mm	60.5
Drive Motor		
-SN	hp	1/27
	kW	0.03
-SM	hp	1/20
	kW	0.04
-SH	hp	1/15
	kW	0.05
Max. Full Load Speed		
-SN	rpm	1.3
-SM	rpm	10
-SH	rpm	29

Specifications (cont.)

Parameter	Units	MI-6111E
Delivered Torque		
-SN	ft-lbs	28
	Nm	38
-SM	ft-lbs	12
	Nm	16
-SH	ft-lbs	6
	Nm	8
Withstand Torque		
-SN	ft-lbs	66
	Nm	89
-SM	ft-lbs	33
	Nm	45
-SH	ft-lbs	18
	Nm	24
Position Accuracy		
-FSS	deg	±0.5
-FDS	deg	±0.05
-FDE	deg	±0.01
-FIE	deg	±0.05
Max. Gear Drive Backlash	deg	0.2
Limit-to-Limit Rotation with Limit Switches	deg	±200
Overall Dimensions (W x D x H)	in	12.5 x 16.5 x 8
	mm	317 x 419 x 203
Net Weight	lbs	51
	kg	23

Configuration Options

Feedback		Limit Switches		Rotary Joint w/ RF path		Slipring Assembly		RF Switch Wiring		Speed	
-FSS		-LS		-RJ0		-SR0		-SW0		-SN	
-FSS	Single Speed Synchro (1:1)	-LS0	No Adjustable Limit Switches	-RJ0	No Rotary Joint	-SR0	No Slipring	-SW0	No RF Switch Wiring	-SN	Normal Speed
-FDS	Dual Speed Synchro (36:1)	-LS	Adjustable Limit Switches	-RJ18	DC-18 GHz	-SR60	60 Conductor	-SW	RF Switch Wiring	-SM	Medium Speed
-FIE	Indirect Coupled Incremental Encoder			RJ26.5	DC-26.5 GHz	-SR84	84 Conductor			-SH	High Speed
-FDE	Direct Coupled Incremental Encoder			-RJ40	DC-40 GHz						

Option Compatibility Table

Model	Feedback	Limit Switches	Rotary Joint w/ RF path	Slipring Assembly	RF Switch Wiring
611B-SN	-FSS	Yes	Yes	Yes	Yes - Note 1
	-FDS	Yes	Yes	Yes	Yes - Note 1
	-FIE	No	Yes	Yes	Yes - Note 1
	-FDE	No	No	No	No
611B-SM	-FSS	Yes	Yes	Yes	Yes - Note 1
	-FIE	No	Yes	Yes	Yes - Note 1
	-FDE	No	No	No	No
611B-SH	-FSS	Yes	Yes	Yes	Yes - Note 1
	-FIE	No	Yes	Yes	Yes - Note 1
	-FDE	No	No	No	No

Note 1 - Select either RF Switch Wiring or Slipring Assembly but not both

